

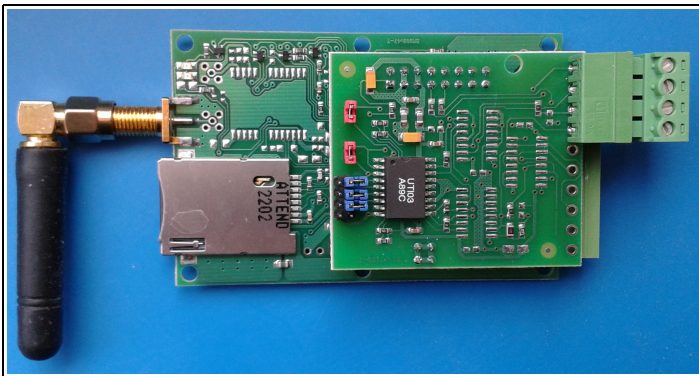
GSM Controller

for SMS remote temperature monitoring
with Pt100 (Pt1000) temperature sensor

BR900-PT100

full function and low cost version

Preliminary Data



Low dimensions (50.5x77.5mm) and low cost GSM controller. Wireless remote control, temperature monitoring & alarming over dual (900,1800Mhz) or quad-band (850,900,1800,1900Mhz) GSM network.

Features:

- Dual or Quad band GSM module SIM900 or compatible
- 1 temperature inputs for 4-wire Pt100 sensors (Pt1000 optionally); (3 two-wire - special order) (4 two-wire – special order)
- Measurement temperature range: 0 to +150°C (other range – special order)
- 4 digital inputs (full function version)
- 1 Solid State Relay outputs (full function version)
- Remote programming using SMS
- User definable input alarming text descriptions
- Pluggable screw terminal block for external signal and power supply connections
- Push-Push SIM holder
- Power supply for module: external stabilised +6VDC...+12VDC (+14.5VDC max)
- Board dimensions: 77.5x50.5mm
- Enclosure (optionally)

